

KINGSTON & AREA'S

**VitalSigns**<sup>®</sup>

2016



**Community Foundation**  
for Kingston & Area

# A Smart and Caring Community Checkup

# Who are we?

- **Community Foundation for Kingston & Area (CFKA):**
  - Independent, local charitable organization
  - Connect charitable giving to community needs
  - Manages \$ 16.5 M in assets
  - Distributed over \$ 9 M since inception
  - One of 191 Community Foundations in Canada

# Vital Signs® 2016

- Our 8<sup>th</sup> year of reporting:
  - Annual community check-up
  - Gain an understanding of the issues facing our community
  - Help guide our activities
  - Provide a useful resource to the community
  - Spark discussion and action
- Thirty two Canadian communities are participating in Vital Signs week, October 2 – 8, 2016.

# Thank-you to our Sponsors



# Our thanks to

- Community Foundations of Canada
- The Discovery Centre
- Our Advisory Committee
- The Working Group
- Many others

# Today

- **Michael Bell**,  
President, CFKA and Project Leader, *Vital Signs*® 2016
- **Norm Taylor**,  
President, Global Network for Community Safety
- **Diane Longboat**,  
Elder, Centre for Addictions and Mental Health
- **Florence Campbell**, Honorary Life Member, CFKA
- **Panel with Q&A's**

# Michael Bell

- President, Community Foundation for Kingston & Area
- Project Leader, *Vital Signs*<sup>®</sup> 2016

# Enriched Child Care → Huge ROI



One dollar **spent** on enriched child care **saves** 17 dollars in future criminal justice costs.

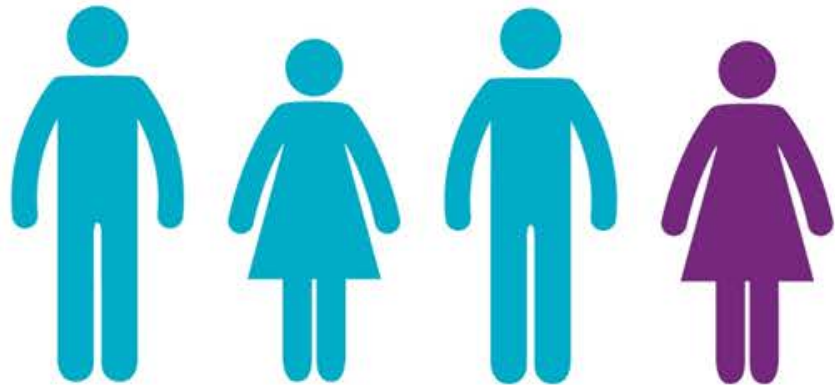
*Source: Crime Prevention in Ontario: A Framework for Action*



# Deeply Concerning

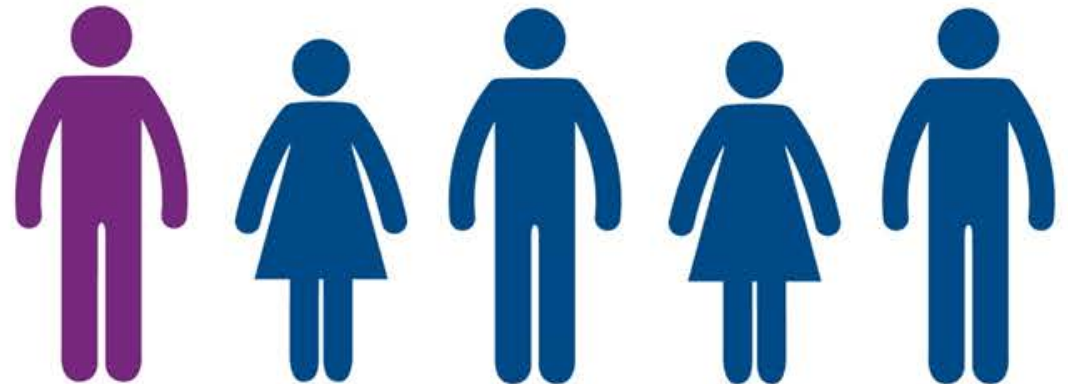
**1 in 4**

children in Canada will experience a mental health issue by the time they are 18



**1 in 5**

children with mental health needs will access services



# Food In-Security

**1 in 3**

users of Partners in Mission  
Foodbank is a **child**.



# Engagement to overcome challenges



# Coordination & Collaboration

- Pathways for Children and Youth:
  - The Moving on Mental Health Task Force
- Loving Spoonful:
  - 39 tons of food sourced in 2015; then
  - Stored, processed and re-distributed in 2015/16
- KFL&A Community Risk Watch:
  - 18 agencies coordinating actions

# Norm Taylor

- President, Global Network for Community Safety
- Note: insert .PPT as an object

# Diane Longboat

- Elder, Centre for Addictions and Mental Health
- Note: insert .PPT as an object

# Florence Campbell

- Honorary Life Member,  
Community Foundation for Kingston & Area

# Panel with Q's and A's

- Michael Bell (moderator)
- Diane Longboat
- Norm Taylor

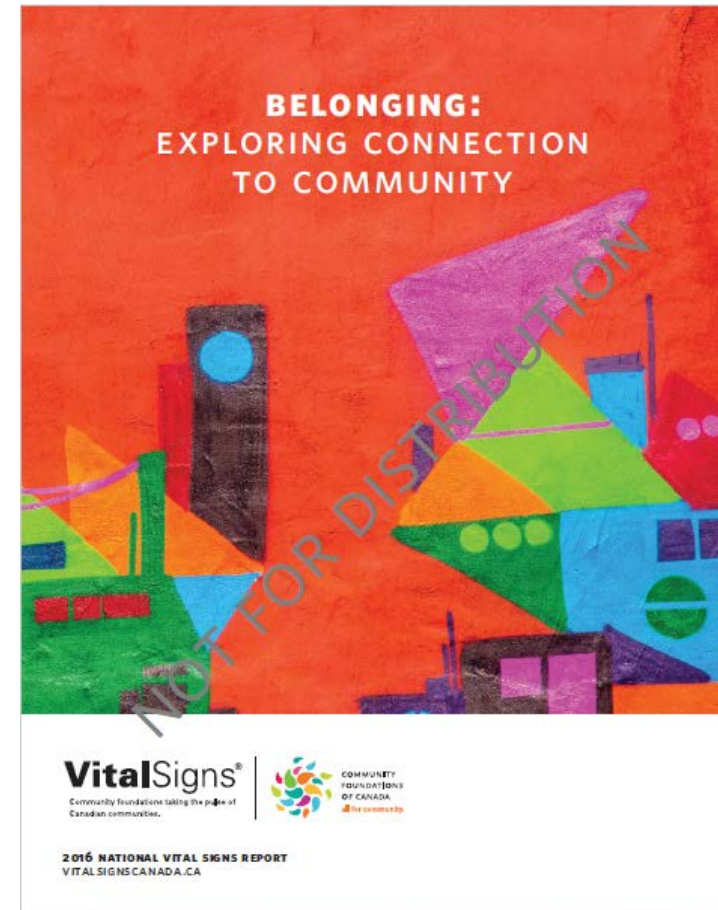


# CFC National Report



COMMUNITY  
FOUNDATIONS  
OF CANADA  
*all for community.*

<http://communityfoundations.ca/vitalsigns/>



# Contact us



**Community Foundation**  
for Kingston & Area

[www.cfka.org](http://www.cfka.org)  
613.546.9696



[www.facebook.com/CFKingstonArea](http://www.facebook.com/CFKingstonArea)



@CFKingstonArea



[www.linkedin.com/company/community-foundation-for-kingston-&-area](http://www.linkedin.com/company/community-foundation-for-kingston-&-area)